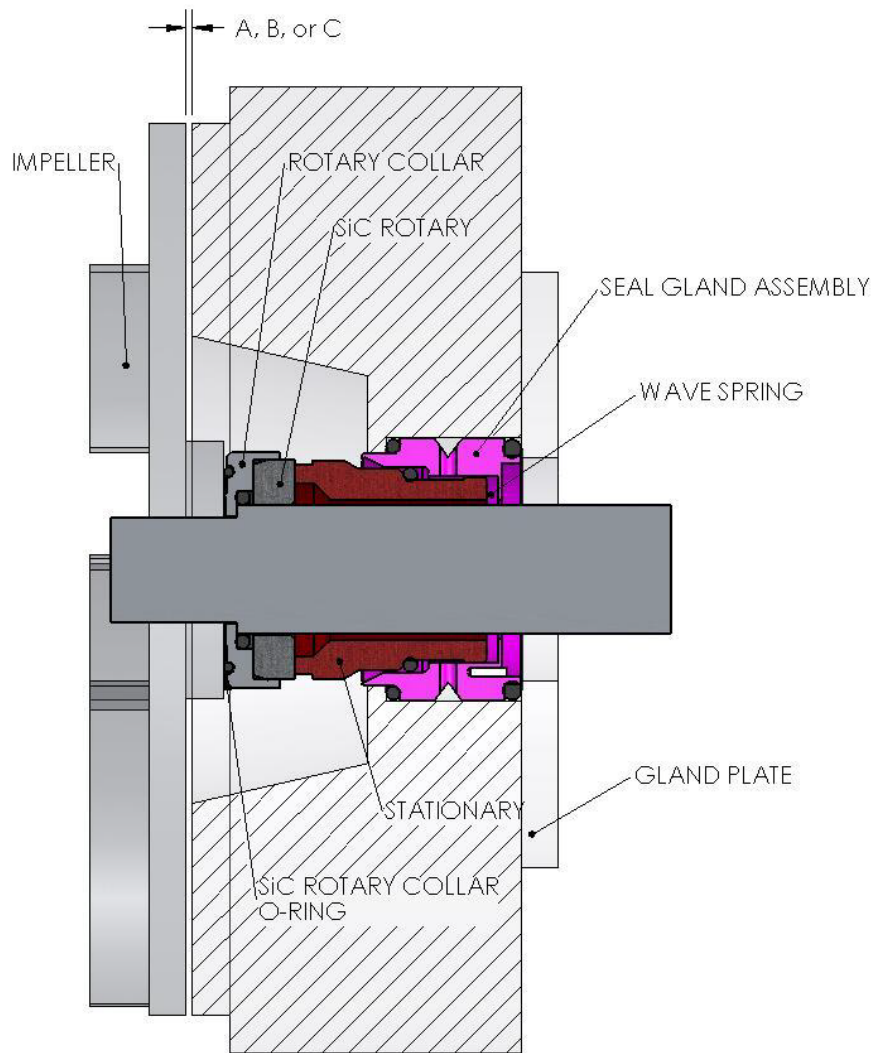


FP/FPX Fristam Single Seal Installation Instructions



- 1) Inspect pump for shaft run-out and for shaft deflection.
 - 2) Inspect shaft for burrs and nicks.
 - 3) Install seal/gland assembly into pump stuffing box.
 - 4) Position gland plate and tighten bolts to pump body/stuffing box.
 - 5) Place pump body onto frame adaptor.
 - 6) Tighten bolt in order to fasten pump body into position.
 - 7) Lubricate rotary seal shaft o-ring.
 - 8) Slide rotary seal onto shaft until both seal faces make contact.
 - 9) Slide pump impeller on shaft, then tighten impeller nut (this action will compress seal.)
- NOTE:** When tightening impeller nut, inspect seal for correct spring compression.
- 10) Measure impeller gap between back of impeller and face of stuffing box:
 - A. For FP, FPX pump models 700, 710, 720, 740, 1740: gap should be 0.040"
 - B. For FP, FPX pump models 353, 354: gap should be 0.060"
 - C. For FP, FPX pump models 345, 355: gap should be 0.040"